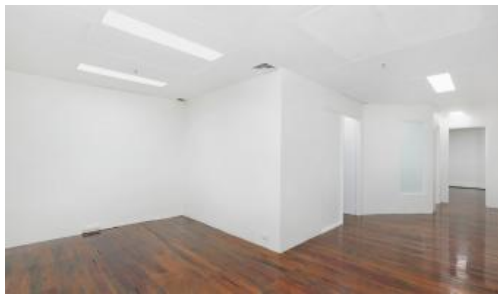




Level 6, Suite 42,/301 Castlereagh Street, Sydney



Investment - Fitted Suite - 54 Sqm - Close to Museum & Central

- Investment Suite

- 54 sqm

- Fitted suite with 3 offices/meeting rooms and open plan area

- Serviced by Museum, Central train stations and Museum bus stations

- Close to China Town the Law Centre

Price \$432,000 (To be sold as a going concern)

Property type Commercial

Property ID 23

Agent Details

Robin Simpson - 0426 251 234

Office Details

Your Office
Level 7 Suite 708 37 Bligh St Sydney,
NSW, 2000 Australia
02 9223 0891

The building houses a variety of business professionals, and trading companies. Its exceptional location making it the ideal choice for many. It's close to everything, Family Court, public transport, shops, banks, hotels, and the Hyde Park.

Tenants Details

Tenant: Details available on request

Month to month lease

Current gross Rental: \$30,888 (No GST)

